

Brighton & Hove Health and Wellbeing Board

Summary Transitional Arrangements October 2011



Dr. Tom Scanlon
Director of Public Health
NHS Sussex (Brighton and Hove) /
Brighton & Hove City Council

Terry Parkin
Strategic Director People /
Director of Children's Services
Brighton & Hove City Council

Contents:

	Page Number
Introduction	1
Process	1
Scope	1
Function	2
Governance	2
Membership	3
Supplementary documents	3
Annex A: Lines of accountability for the Health and Wellbeing Board	
Annex B: Process of further engagement in this consultative process	

Introduction

The Health and Social Care Bill will require local authorities to establish a Health and Wellbeing Board by April 2013. This board will be a formal sub-committee of upper tier and unitary local authorities under Section 102 of the Local Government Act.

This paper summarises the proposed approach to establishing a health and wellbeing board during the shadow year of 2012-2013 and follows from two longer discussion papers circulated prior to each of the consultation workshops. The purpose of this paper is to elicit further engagement and feedback prior to the formal establishment of the shadow Health and Wellbeing Board in April 2012.

Process

In Brighton and Hove a decision was reached between officers and elected members *not* to become an early implementer of a Health and Wellbeing Board, but rather to engage in a discussion with partners and stakeholders to work at getting the scope, functions, membership and governance of the Brighton and Hove Health and Wellbeing Board right.

Two workshops were held to discuss the establishment of a Brighton and Hove Health and Wellbeing Board. The first on 26th July 2011 was used to plan out the scope of the health and wellbeing board. A second workshop on 3rd October was held to discuss the likely make up of the board with regard to three key components: function, membership and governance.

In addition, a national pause was announced in the passage of the Health and Social Care Bill and following further national discussion, led by an NHS Futures Forum, a number of small amendments were made to the Bill. With regard to the establishment of a health and wellbeing board, these included stronger public engagement, a stronger role for joint commissioning between health and social care, and powers to the health and wellbeing board to refer to the NHS Commissioning Board, the commissioning plans of a clinical commissioning group if these do not meet the requirement of the health and wellbeing strategy.

The Bill was passed in the House of Commons on 8th September 2011, and, despite considerable lobbying from health and nursing groups, in the House of Lords on 14th October 2011. The collective view from these workshops is summarised in the rest of this document.

Scope

The primary purpose of the board will be to oversee the delivery of a joint health and wellbeing strategy which will be based on the local joint strategic needs assessment. The board will monitor the delivery of a series of outcomes covering public health, children and adult social care.

The board will also review and approve the commissioning plans of the clinical commissioning group with regard to how they address the needs identified in the joint strategic needs assessment (JSNA) and written into the health and wellbeing strategy. The joint strategic needs assessment will also inform the work of the partnerships working under the Local Strategic Partnership.

Function

The remit of the health and wellbeing board will be clearly defined and it will not attempt to assume every function with regard to health and wellbeing, but rather concentrate on the strategic leadership and delivery of a number of key outcomes. The board will be transformational rather than transactional and will be able to influence how budgets are spent, rather than oversee a specific health and wellbeing budget.

The board will have input into wider determinants of health such as housing, economy and education, but this will not be through the board directly overseeing relevant partnerships, but rather having a clear link to groups who led on this work. Key to this is the nature of the relationship to the Local Strategic Partnership and Public Service Board which will emerge in the first shadow year.

The board will be able to hold commissioners, who hold a health and wellbeing remit to account. This will include commissioners delivering children and adults' health and wellbeing services, public health services and the clinical commissioning group.

The board will agree a set of health and wellbeing outcomes; these will be strongly influenced by the national public health outcomes framework but also by the joint strategic needs assessment. The national public health outcomes framework and JSNA will then determine the health and wellbeing strategy that the Health and Wellbeing Board will agree and from which the set of outcomes will be selected and agreed.

The board will also have due regard to the annual report of the Director of Public Health which will be formally presented to the board each year.

The board will not have a formal role in emergency planning but will be part of the assurance process for making sure that processes are in place to protect the public's health in the event of an emergency.

Governance

The board will report to Full Council. The board will also establish a formal relationship with the Public Service Board and Local Strategic Partnership. There are likely to be some overlaps in remit between the board and these groups. During the first shadow year (2012-13), any overlaps will be identified with the aim of removing these before the formal establishment of the board in April 2013. As part of this shadow year the board will plan in a formal board to board meeting with the Public Service Board.

The board will meet 2 monthly in the first shadow year. A formal 'taking stock' session will take place mid way through the first shadow year. The board will be supported by a key officer from the City Council's Strategy and Governance department.

Key decision making bodies, such as the Children and Young People's Trust Board, the Local Safeguarding Children's Board and the Joint Commissioning Board will continue, with the same, a reduced or a reformed remit during the shadow year. These groups will discuss their changing role during this first shadow year and report to the Health and Wellbeing Board regarding their remit and any changes in their establishment or role. The shadow year will also be used to 'train up' the members of the Health and Wellbeing Board in their new roles.

As the board comprises both officers and elected members, it shall reach agreement by discussion and not by voting.

Membership

The membership shall start small, and during the first shadow year consideration will be formally given to extending the membership as required.

- The formal membership of the board will be as follows:
- An elected member from the party in office will chair the board;
- The main opposition parties will also select one member to sit on the board;
- The three statutory Directors of Public Health, Children's Services and Adult Social Care;
- One lead clinical and non-clinical member from the Clinical Commissioning Group;
- One member from Healthwatch.

In addition a number of groups will be invited to be in formal attendance at the board. These will include:

- The Youth Council;
- The Older People's Council
- Sussex Partnership Foundation Trust;
- Sussex Community Trust;
- Brighton and Sussex Universities Hospital;
- Community and Voluntary Sector Forum;
- Sussex Probation Trust
- Sussex Police.

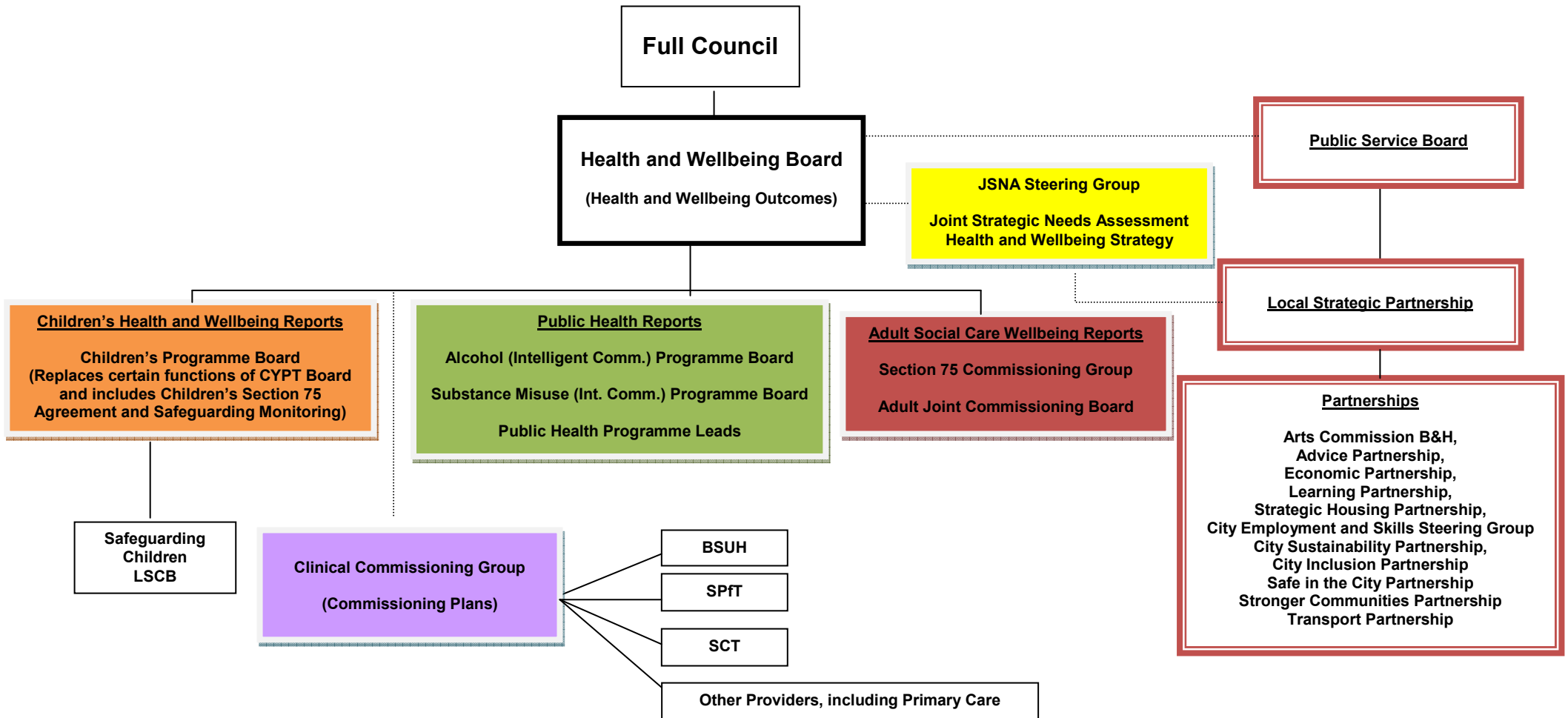
Meetings of the board will be in public and members of the public will have the opportunity to submit questions before the meeting or request, at the discretion of the chair a hearing during a meeting.

Supplementary documents

Annex 1 summarises the proposed lines of accountability for the Health and Wellbeing Board

Annex 2 summarises the process of further engagement in this consultative process

Annex A: Health and Wellbeing Board: Transitional accountability framework



Health and Wellbeing Board Outcome Areas:

Health Improvement: Obesity, Nutrition, Physical activity, NHS Health Checks, Smoking cessation, Alcohol and substance misuse, Sexual health and teenage pregnancy, Health inequalities;

Health Protection: Flu (seasonal and pandemic), Immunisations and vaccinations, seasonal mortality;

Health Service Commissioning: Sussex Community Trust, BSUH, Sussex Partnership Foundation Trust, 1ry Care, Other commissioned NHS providers;

Children: Section 75 (children), Dental health, Accidental injury, Health visiting, School health, Children in need, Looked-after children, safeguarding,

Adult Social Care: Section 75 (adults), Quality outcomes;

100

Annex B: Health and Wellbeing Board: Consultation Pathway (Shadow Year)

	Milestone Date
Hold HWB development seminar 1	26 July 11 (10:00 – 14:00) ✓
Develop draft model (inc shadow arrangements) and produce cover report	August 11 ✓
Present draft model to Public Service Board for consultation	13 September 11 (10:00-12:00) ✓ (report deadline 30 August 11)
Hold HWB Development Seminar 2	03 October 11 (11.00 – 13:00) ✓
Present key themes from Seminar to PHWBG for discussion (relevant leads responsible for updating BHCC SLB and PCT TE)	10 October 11 ✓
Present draft model and cover report to JSNA Steering Group for input	11 October 11 (14:00 – 16:00) ✓
Develop draft model (inc shadow arrangements) and produce cover report	04 – 14 October 11 ✓
Present draft model and cover report to Children's & Young People's Trust Board for consultation	17 October 11 (17:00 – 19:00) ✓ (report deadline 05 October 11)
Undertake Joint Commissioning Board Pre-Meet	18 October 11 (14:00) ✓
Present draft model and cover report to LINKs Steering Group for consultation	19 October 11 (11:30) ✓ (next meeting 23 November 11 (18:00 – 20:00))
Present draft model and cover report to CCG Board for consultation	25 October (14:00 – 17:00)
Present draft model and cover report to Public Service Board for consultation and confirm future sign-off	08 November 11 (10:00 – 12:00) (report deadline 25 October)

Brighton & Hove Health and Wellbeing Board Summary Transitional Arrangements

Version: October 18th 2011

requirements	
Update PHWBG on progress and outcome of consultations to date	11 November 11 (11:00 – 12:30)
Present draft model and cover report to Joint Commissioning Board for consultation	14 November 11 (17:00) (report deadline 02 November 11)
Present draft model and cover report to Leaders Group for consultation	14 November 11 (14:00) (report deadline 10 November 11)
Present draft model and cover report to HOSC for consultation	16 November 11 (16:00 – 18:00) (report deadline 08 November 11)
Hold Members Seminar	21 November 11 (17:00 – 19:00)
Present draft model and cover report to City Employment & Skills Steering Group for information	24 November 11
Hold Lead Commissioners' Workshop (BHCC and CCG)	28 November 11 (13:00 – 14:30 - room 122 KH)
Present draft model and cover report to CMT for consultation	30 November 11
Present draft model and cover report to Stronger Communities Partnership for information	01 December 11
Present draft model and cover report to Healthy City Partnership for information	05 December 11
Present draft model and cover report to City Inclusion Partnership for information	06 December 11
Present draft model and cover report to Local Strategic Partnership for information and input	06 December 11 (16:00 – 18:00) (report deadline 15 November 11)
Present draft model and cover report to Children's JC/MG for consultation	06 December 11 (10:00)

Brighton & Hove Health and Wellbeing Board Summary Transitional Arrangements

Version: October 18th 2011

Finalise interim HWB model and produce cover report	07 December 11
Brief BHCC Leader and CEO on interim HWB model and obtain 'in principle' approval (Leadership Breakfast Meeting)	08 December 11 (10:00)
Present interim HWB model and cover report to Leaders Group for input and 'in principle' approval	12 December 11 (15:00) (report deadline 08 December)
Present draft model and cover report to Safeguarding Board for consultation	13 December 11 (12:30)
Present draft model and cover report to Strategic Housing Partnership for information	13 December 11
Present interim HWB model and cover report to PHWBG for approval (relevant leads responsible for updating BHCC SLB and PCT TE)	15 December 11 (15:00 – 16:30)
Present interim HWB model and cover report to CCG Board for approval	20 December 11 (14:00 – 17:00) (next meeting 31 January 12) (report deadline 08 December)
Present final version model and cover report to SLB for approval	21 December 11 (14:30)
Present final version model and cover report at Governance Chairman's Pre-Meet	09 December 11 (12:00) (report deadline 30 November 11)
Present final version model and cover report to Informal Cabinet for approval	04 January 12 (09:30) (report deadline 22 December 11)
Present final version model and cover report to Governance for approval	10 January 12 (16:00) (report deadline 21 December 11)
Present final version model and cover report to Cabinet for approval	19 January 12 (16:00) (report deadline 05 January 12)
Present final version model and cover	26 January 12 (16:30)

report to Full Council for approval	(report deadline 16 January 12)
-------------------------------------	---------------------------------

Note – A second report will be required, which updates on the shadow year and formally establishes the statutory board with whatever functions are determined to be allocated (taking into account the learning and on-going development of the shadow year and, importantly, the functions delegated to the HWB in the Act). **2012/13 council meeting dates are still to be set** but it is anticipated that this take place in October / November 12.

